



## Study Guide 2022-2023

# Charlotte's Web



**ADAPTED BY JOSEPH ROBINETTE  
BASED ON THE BOOK BY E.B. WHITE**

### Florida Standards

#### **Language Arts**

LAFS.2.W.1: Text Types and Purposes  
LAFS.2.RI.1: Key Ideas and Details  
LAFS.2.RL.1: Key Ideas and Details  
TH.K.C.1: Cognition and reflection

#### **Theater and Visual Arts**

TH.2.F.2: Careers in and related to the arts  
TH.2.S.1: The arts are inherently experiential  
VA.1.S.1: The arts are inherently experiential

**G**

Content appropriate for all audiences.

Children two years of age and younger may sit on laps. Older children must have a ticket.

# *Charlotte's Web*

## Table of Contents

<b>Introduction</b> . . . . .	3
 <b>Enjoying Live Theater</b>	
Theater is a Team Sport . . . . .	4
The Actor/Audience Relationship . . . . .	5
 <b>About the Play</b>	
About the Authors . . . . .	6
The Characters . . . . .	7
Summary . . . . .	7
 <b>Activities</b>	
Story Comparison . . . . .	8
Discussion Questions . . . . .	9
Design Your Classroom! . . . . .	10
Friendly Letter Writing . . . . .	11

# Charlotte's Web

## An Introduction

Educators:

Welcome Home! Orlando Shakespeare Theater is thrilled to be back to full educational offerings at the Lowndes Shakespeare Center and in your school! We can't wait to share the magic of live theater with you and your students once again.

With a Children's Series of older and newer classic stories and a Signature Series with recent hits, traditional favorites and of course Shakespeare, there is something for everyone.

This Study Guide will assist you in preparing for your Field Trip, as well as give you follow up activities and lessons to continue exploring themes when back in your classroom.

We look forward to working with you this year and learning how we can serve you and your students. Thank you for your tremendous work in nurturing our audiences of tomorrow.

Anne Hering  
Director of Education

Jennifer Paxton  
Education Coordinator



# Charlotte's Web

## Enjoying Live Theater

### Theater is a Team Sport

The **Playwright** writes the script. Sometimes it is from an original idea and sometimes it is adapted from a book or story. The Playwright decides what the characters say, and gives the Designers guidelines on how the play should look.

The **Director** creates the vision for the production and works closely with the actors, costume, set and lighting designers to make sure everyone tells the same story.



Director - Nick Bublitz

The **Actors** use their bodies and voices to bring the playwright's words and the director's ideas to life on the stage.

The **Designers** imagine and create the lights, scenery, props, costumes and sound that will compliment and complete the director's vision.

The **Stage Manager** assists the director during rehearsals by recording their instructions and making sure the actors and designers understand these ideas. The Stage Manager then runs the show during each performance by calling cues for lights and sound, as well as entrances and exits.

The **Shop** and **Stage Crew** builds the set, props and costumes according to the designer's plans. The Stage Crew sets the stage with props and furniture, assists the actors with costume changes and operates sound, lighting and stage machinery during each performance.



Front of House Manager - David Monge

The **Front of House Staff** welcomes you to the theater, takes your tickets, helps you find your seat and answers any question you may have on the day of performance.

The **Theater** is where it all takes place. Orlando Shakespeare Theater In Partnership with UCF is the only professional, classical theater company in Central Florida, reaching students and audiences in the surrounding eight counties.

**Mission:** To enrich our community with engaging professional theater, inspiring educational experiences, and thought-provoking new plays.



Sound Designer - Britt Sandusky  
Photo: Rob Jones



Costume Designer - Mel Barger



# *Charlotte's Web*

## Enjoying Live Theater

### **The Actor/Audience Relationship**

The Audience is the reason Live Theater exists. At Orlando Shakes, we cherish the Actor/Audience relationship, the unique give and take that exists during a performance which makes the audience an ACTIVE participant in the event. The actors see the audience just as the audience sees the actors, and every, laugh, snuffle, chuckle and gasp the audience makes effects the way the actor plays his next moment. We want you to be engaged, and to live the story with us!

There are certain Conventions of the Theatrical Event, like, when the lights go down you know that the show is about to start, and that the audience isn't encouraged to come and go during a performance. Here are some other tips to help you and your classmates be top notch audience members:

- Please make sure to turn off your cell phones. And NO TEXTING!
- Please stay in your seat. Use the restroom before you take your seat and stay in your seat unless there is an emergency.
- Please do not eat or drink in the theater.



## Charlotte's Web

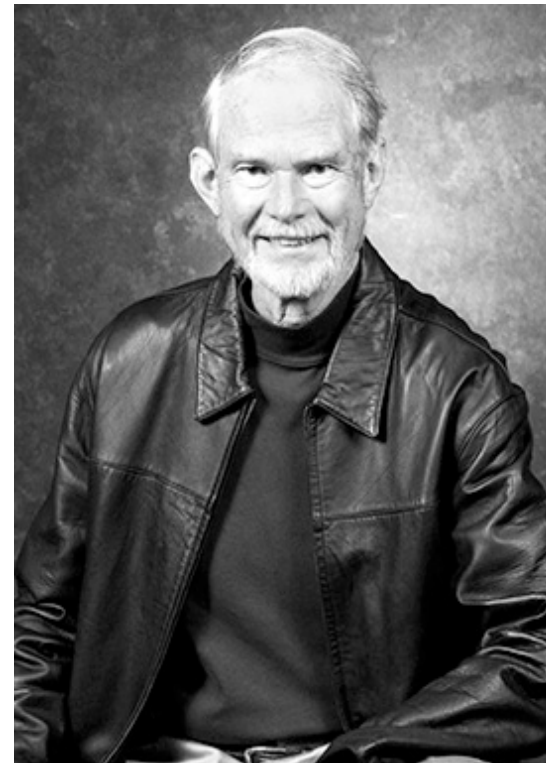
### About the Authors

**E.B. White** was born in New York in 1899. In 1927, White joined The New Yorker magazine as writer and contributing editor—a position he would hold for the rest of his career. He wrote three books for children, including *Stuart Little* (1945) and *Charlotte's Web* (1952). In 1959 he revised *The Elements of Style* by the late William Strunk Jr., which became a standard style manual for writers. White, who earned a Pulitzer Prize special citation in 1978, passed away at his home in Maine in 1985.

<https://www.biography.com/writer/eb-white>



**Joseph Robinette** is a Tony Award nominee and Drama Desk Award nominee for the libretto of the acclaimed *A Christmas Story, The Musical*. He is the author or co-author of 55 published plays and musicals. His works have been produced at the Lunt-Fontanne Theatre, The Theater at Madison Square Garden and Lincoln Center for the Performing Arts in New York City, the 5th Avenue Theatre in Seattle, the Goodman Theatre in Chicago, the BBC in Britain, in all 50 states and in 21 foreign countries. Twelve of his works have been translated into foreign languages, and another five have been anthologized. Robinette collaborated with E.B. White on the authorized stage version of *Charlotte's Web*, and he wrote the musical version with Charles Strouse (*Annie and Bye, Bye, Birdie*). Other dramatizations include *The Lion, the Witch and the Wardrobe*, *Anne of Green Gables* and *Debbie Macomber's A Gift to Last* and *The Inn at Rose Harbor*. He is the recipient of the American Alliance for Theatre and Education's Distinguished Play Award for *Sarah, Plain and Tall* and the Children's Theatre Foundation of America medallion for his "body of dramatic works for family audiences in the United States and beyond."



<https://www.dramaticpublishing.com/authors/profile/view/url/joseph-robinette>

# Charlotte's Web

## About the Play

### The Animals

Charlotte - a spider  
Wilbur - a pig  
Templeton - a rat  
Goose  
Gander  
Sheep  
Baby Spider

### The Humans

Fern  
Homer  
Mrs. Arable  
A Spectator  
A Judge  
Uncle  
Lurvy - a farmhand  
Avery  
A Reporter  
President of the Fair

### Summary

As the sun rises on the Arable's farm, Fern Arable discovers that her father is planning on killing the runt of the litter of pigs born during the night. She runs to save it and persuades her father to let her keep the pig, whom she names Wilbur. Wilbur is taken to the farm of her uncle, Homer Zuckerman, where he meets the other farmyard animals. However, Wilbur is lonely without a special friend of his own...that is, until he meets Charlotte--a spider. Charlotte decides to save Wilbur from the fate of all other pigs and she begins to spin the words "Some Pig" in her web. When her words are discovered, the Zuckermans are astounded and realize the potential for publicity and financial revenue.

When more words appear, the story soon spread around and reporters descend on the Zuckerman farm. Homer is persuaded to take Wilbur to the county fair, where he competes in the 'Best Pig' competition. Knowing that she is near the end of her life, Charlotte agrees to go with Wilbur as she know he needs her help to produce more words. Her final word, before releasing her sack of eggs, is 'Humble'. Although Wilbur does not win the prized blue ribbon, the Zuckerman family is overjoyed to find out that he has been awarded a special medal and a cash prize. When it is time to leave, Charlotte reveals to Wilbur that she is dying and does not have the strength to travel. Wilbur is sad to lose his friend, but he takes her egg sack to honor her memory and hatch them back in the barn.



<https://stageagent.com/shows/musical/16161/charlottes-web>

# ***Charlotte's Web***

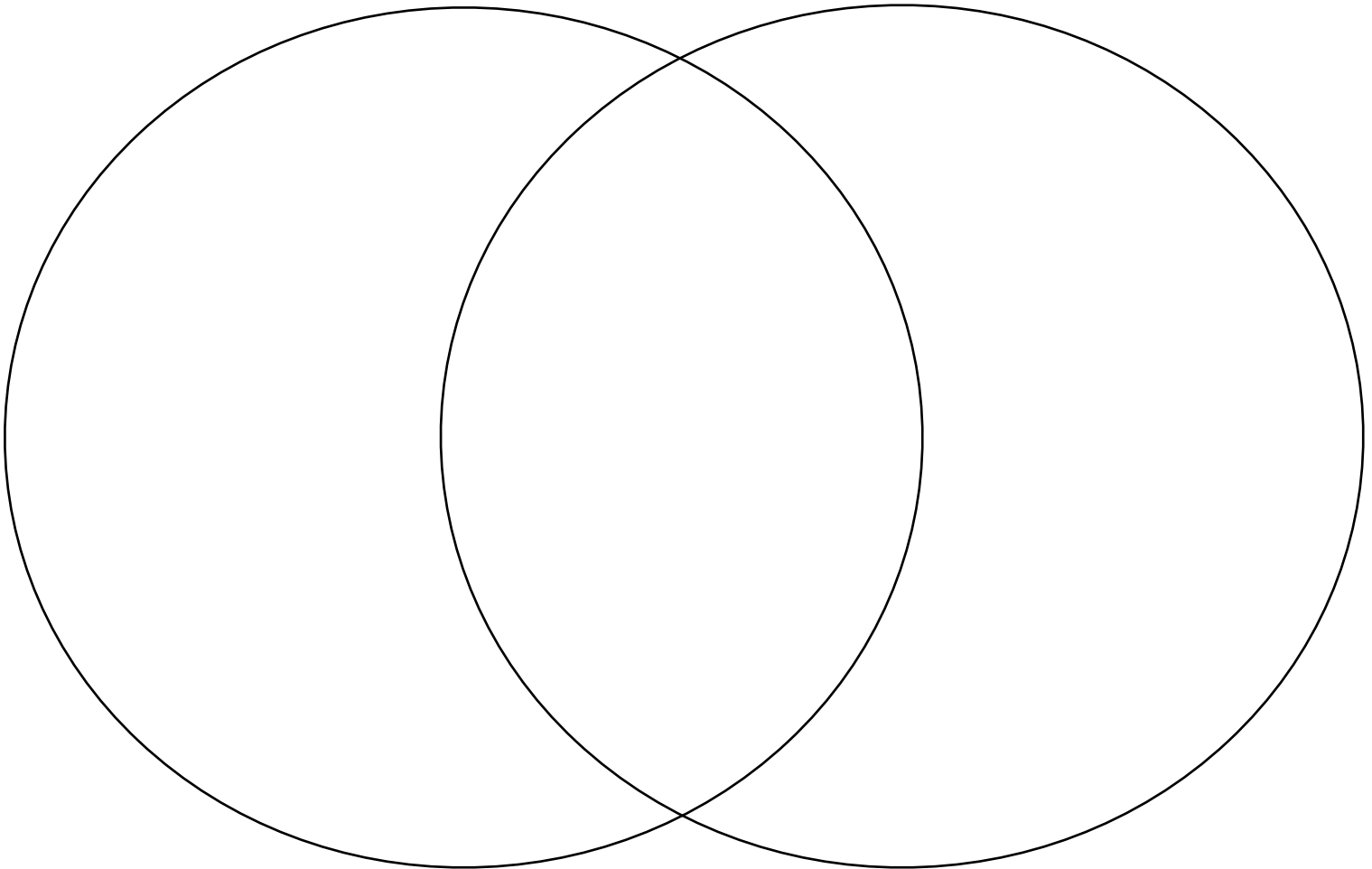
## **Story Comparison**

1. Read *Charlotte's Web* aloud in class. Discuss the book together.
2. Have students compare the story of *Charlotte's Web* to that of the play using the venn diagram below.
3. Compare your diagram to other students.

**Just About the Book**

**About Both**

**Just About the Play**



# *Charlotte's Web*

## Discussion Questions

### ***Asking questions that lead students up the “thinking ladder”.***

Use the following pattern in asking questions:

1. Ask OPEN questions to encourage and engage children.
2. Ask FOCUSED questions to elicit and organize specific information
3. Ask CONNECTING questions to help children learn to see the relationships between events, characters and ideas.
4. Ask broad questions to help children GENERALIZE/ learn to draw conclusions.
5. Accept, record and read all responses on the board, chart or overhead for all to see.

#### **OPEN question examples:**

- What did you notice at the play today....What did you see?
- What about the play was different from the book/story?
- What surprised you?
- What impressed you?

#### **FOCUSED questions:** (questions that probe children’s’ insights)

- What was Wilbur struggling with?
- How did he handle that struggle?

#### **ANALYZING/CONNECTING questions:**

- What lesson did Wilbur learn?
- What lesson did Fern learn?

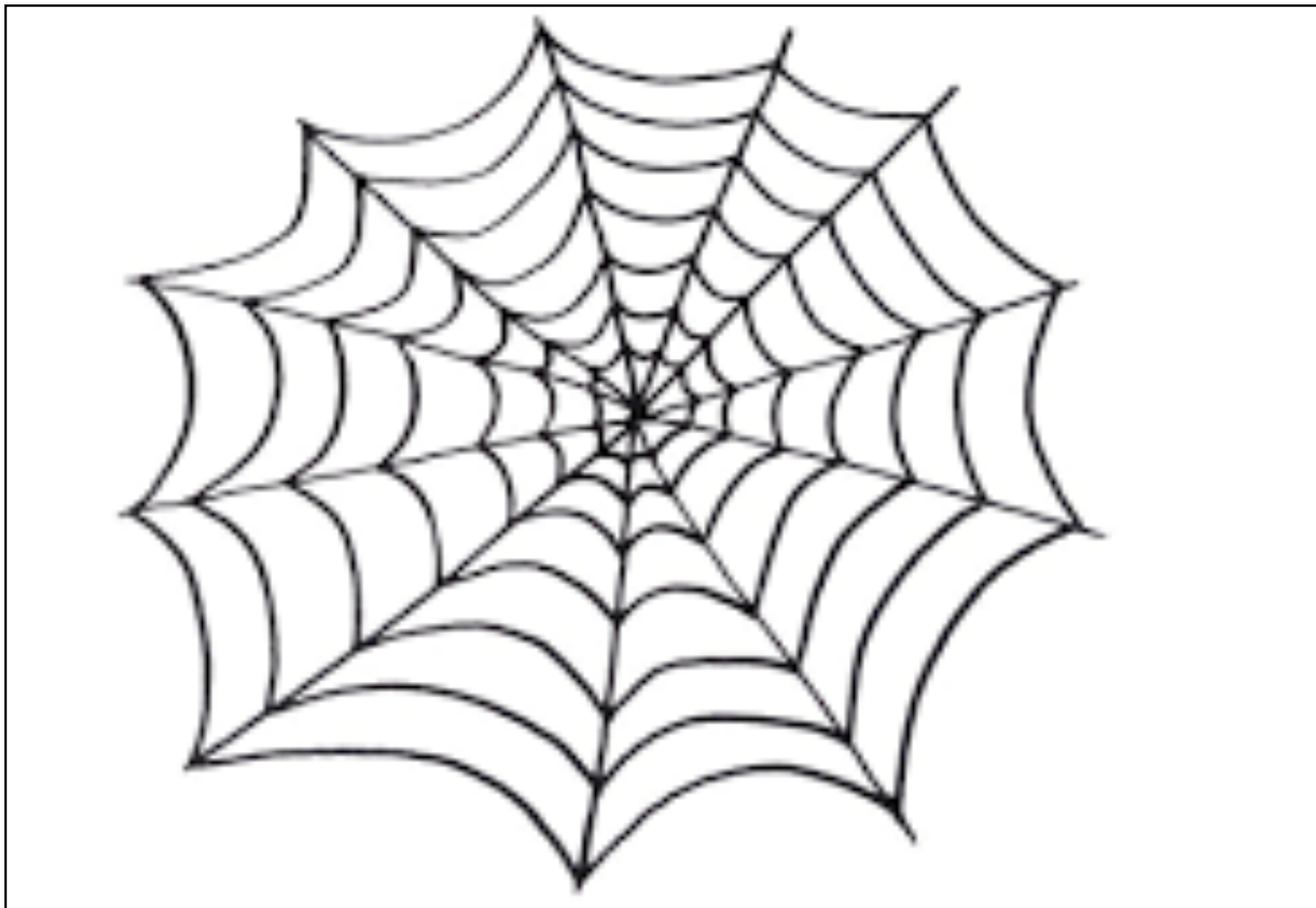


# *Charlotte's Web* Design Your Classroom!

## Design your classroom!

In *Charlotte's Web*, Charlotte must design her web to save Wilbur.

If you wanted to send a message on a web, how would your web look?  
Write your message on the web below.



# Charlotte's Web

## Friendly Letter Writing

### Friendly Letter Writing

We love to hear from you at Orlando Shakes! So write us a letter to let us know what you thought! Introduce your topic, state your opinion, supply a reason for your opinion and close the letter. Follow to format below to include a heading, salutation, body, closing, and signature. Format an envelope according to the picture and send it our way. Teacher and parent comments are also appreciated! Thank you!

**From:**

Print Name \_\_\_\_\_

Street Address \_\_\_\_\_

City \_\_\_\_\_, State \_\_\_\_\_, Zip \_\_\_\_\_


**Dear Orlando Shakespeare Theater,**



**Sincerely,**

Sign Name \_\_\_\_\_

Print Name \_\_\_\_\_

Print Name _____	
Street Address _____	
City _____, State _____, Zip _____	
<b>Orlando Shakespeare Theater ATTN: Education Department 812 East Rollins Street Orlando, FL 32803</b>	