



Study Guide 2022-2023

A Big Day for Baseball: A Magic Tree House Adventure



Book & Lyrics by Will Osborne and Jenny Laird

Music and Lyrics by Randy Courts

Based on A Big Day for Baseball (Magic Tree House #29)

by Mary Pope Osborne

Florida Standards

Language Arts

LAFS.4.W.1: Text Types and Purposes

LAFS.4.RI.1: Key Ideas and Details

LAFS.4.RL.3: Integration of Knowledge and Ideas

LAFS.3.RL.1: Key Ideas and Details

Theater and Visual Arts

TH.2.F.2: Careers in and related to the arts

TH.4.S.1: The arts are inherently experiential.

VA.4.S.1: The arts are inherently experiential.

G

Content appropriate for all audiences.

Children two years of age and younger may sit on laps. Older children must have a ticket.

A Big Day for Baseball: A Magic Tree House Adventure

Table of Contents

Introduction	3
 Enjoying Live Theater	
Theater is a Team Sport	4
The Actor/Audience Relationship	5
 About the Play	
The Authors	6
The Collaborators	6
The Characters	7
Summary	7
 Activities	
Setting The Scene	8
Discussion Questions	9
Design a Backdrop	10
Build A Story	11
Friendly Letter Writing	12

A Big Day for Baseball: A Magic Tree House Adventure

An Introduction

Educators:

Welcome Home! Orlando Shakespeare Theater is thrilled to be back to full educational offerings at the Lowndes Shakespeare Center and in your school! We can't wait to share the magic of live theater with you and your students once again.

With a Children's Series of older and newer classic stories and a Signature Series with recent hits, traditional favorites and of course Shakespeare, there is something for everyone.

This Study Guide will assist you in preparing for your Field Trip, as well as give you follow up activities and lessons to continue exploring themes when back in your classroom.

We look forward to working with you this year and learning how we can serve you and your students. Thank you for your tremendous work in nurturing our audiences of tomorrow.

**Anne Hering
Director of Education**

**Jennifer Paxton
Education Coordinator**



A Big Day for Baseball: A Magic Tree House Adventure

Enjoying Live Theater

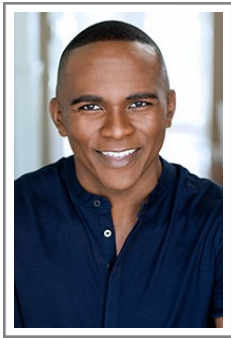
Theater is a Team Sport

The **Playwright** writes the script. Sometimes it is from an original idea and sometimes it is adapted from a book or story. The Playwright decides what the characters say, and gives the Designers guidelines on how the play should look.

The **Director** creates the vision for the production and works closely with the actors, costume, set and lighting designers to make sure everyone tells the same story.



Production Manager -
George Hamrah



Director - Shonn
McCloud

The **Actors** use their bodies and voices to bring the author's words and the director's ideas to life on the stage.

The **Designers** imagine and create the lights, scenery, props, costumes and sound that will compliment and complete the director's vision.

The **Stage Manager** assists the director during rehearsals by recording their instructions and making sure the actors and designers understand these ideas. The Stage Manager then runs the show during each performance by calling cues for lights and sound, as well as entrances and exits.



Costume Designer -
Kristina Tollefson

The **Shop** and **Stage Crew** builds the set, props and costumes according to the designer's plans. The Stage Crew sets the stage with props and furniture, assists the actors with costume changes and operates sound, lighting and stage machinery during each performance.



Choreographer - Nicolette
Quintero

The **Front of House Staff** welcomes you to the theater, takes your tickets, helps you find your seat and answers any question you may have on the day of performance.

The **Theater** is where it all takes place. Orlando Shakespeare Theater In Partnership with UCF is the only professional, classical theater company in Central Florida, reaching students and audiences in the surrounding eight counties.

Mission: To enrich our community with engaging professional theater, inspiring educational experiences, and thought-provoking new plays.

A Big Day for Baseball: A Magic Tree House Adventure

Enjoying Live Theater

The Actor/Audience Relationship

The Audience is the reason Live Theater exists. At Orlando Shakes, we cherish the Actor/Audience relationship, the unique give and take that exists during a performance which makes the audience an ACTIVE participant in the event. The actors see the audience just as the audience sees the actors, and every, laugh, snuffle, chuckle and gasp the audience makes effects the way the actor plays his next moment. We want you to be engaged, and to live the story with us!

There are certain Conventions of the Theatrical Event, like, when the lights go down you know that the show is about to start, and that the audience isn't encouraged to come and go during a performance. Here are some other tips to help you and your classmates be top notch audience members:

- Please make sure to turn off your cell phones. And NO TEXTING!
- Please stay in your seat. Use the restroom before you take your seat and stay in your seat unless there is an emergency.
- Please do not eat or drink in the theater.



A Big Day for Baseball: A Magic Tree House Adventure

About the Play

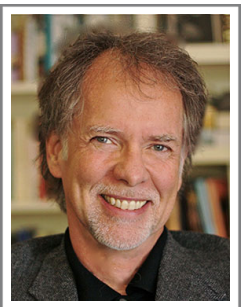
The Author



Mary Pope Osborne is best known for her award-winning and bestselling Magic Tree House series, which has been translated into more than 30 languages and has sold more than 130 million copies worldwide. She was born on May 20th 1949 in Fort Still, Oklahoma. Her father's career in the military required Mary's family to travel rather extensively. Osborne herself says of the experience: "Moving was never traumatic for me, but staying in one place was." After her father retired and her family stopped traveling, Osborne found in the local community theater that sense of adventure that she was missing. She graduated from the University of North Carolina

Chapel Hill. She initially studied drama, however, in her junior year, she switched to a major in religion, after she discovered "an even greater realm of adventure" in the worlds of mythology and comparative religion. Immediately after college, Mary traveled all over the world joining up with a small band of European young people heading to "The East." They traveled overland in a caravan of rickety vans through sixteen Asian countries. Then she finally settled in New York where she met and married her husband Will Osborne, an actor, playwright and director. He is a co-author in many of the books in the MTH series. Looking back on her writing career, Mary says about her husband, "Will has given me the support and encouragement I've needed to be a professional daydreamer-in other words, an author of children's books."

The Collaborators - Book and Lyrics

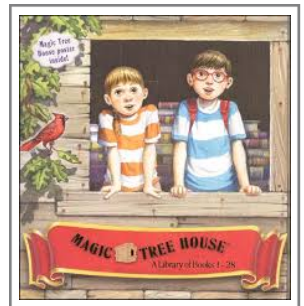


When Will Osborne was a boy, his imagination was full of characters from his favorite books. Pretending to be Robin Hood, Tarzan, and Peter Pan, Will and his friends had many incredible adventures in the woods behind his house.

His love of pretending led him into his first career, as an actor. Will has played the guitar from when he was very young and in 2007, Will worked with composer Randy Courts to create Magic Tree House: The Musical.

This was the perfect chance for Will to combine his passions for music, theater, and great stories. With his wife, Mary

Pope Osborne, Will has written a dozen books for children, including the Magic Tree House Fact Trackers and a picture book, Sleeping Bobby. Will says that writing stories is like being a kid again, playing pretend-except that you get to be all the characters. on The Magic Tree House books for Music Theater International s Broadway Kids Collection.



A Big Day for Baseball: A Magic Tree House Adventure

About the Play



The Collaborators - Book and Lyrics

Randy Courts has collaborated with playwright/lyricist Mark St. Germain on the musicals *THE GIFTS OF THE MAGI* (ten consecutive seasons at the Lambs Theater; over three hundred productions world wide, including two national tours); *JOHNNY PYE AND THE FOOLKILLER* (Lambs Theater; AT&T New Plays Award); *JOSEPH AND MARY* (Los Angeles, Dallas, Indianapolis and in concert in New York City; Pilgrims Progress Foundation Award); *JACK'S HOLIDAY* (Playwrights Horizons, nominated for three Outer Critics Circle Awards, including best musical); *THE GINGERBREAD HOUSE* (commission from Playwrights Horizons and Amblin Entertainment); *THE BOOK OF THE DUN COW* (New Harmony Project, Prospect Theater Company); and *DOCTOR DOLITTLE* (Theatreworks USA). With novelist/librettist Walter Wangerin Jr., Randy wrote the Christmas oratorio *ANGELS AND ALL CHILDREN*, and the operas *POTTER* and *ELISABETH AND THE WATER TROLL* (New Harmony Project). Most recently, Randy collaborated with writer/lyricist Will Osborne on *MAGIC TREE HOUSE: THE MUSICAL*, based on the best selling children's series by Mary Pope Osborne (national tour; c.d. on P.S. Classics). Randy is thrilled to be collaborating with his wife, playwright Jenny Laird, on a series of musicals based on The Magic Tree House books for Music Theater International's Broadway Kids Collection.

The Summary

PLAY BALL! Jack and Annie aren't great baseball players . . . yet! Then Morgan the librarian gives them magical baseball caps that will make them experts. They just need to wear the caps to a special ballgame in Brooklyn, New York. The magic tree house whisks them back to 1947!

When they arrive, Jack and Annie find out that they will be batboys in the game—not ballplayers. What exactly does Morgan want them to learn? And what's so special about this game? They only have nine innings to find out!

The Characters

Annie	Mimi
Jack	Hector
Granny Beck	Jackie Robinson
Morgan	Charlie
Otis	Radio Announcer
Olive	Stadium Announcer
Team Manager	Third Baseman
Coach	Umpire
Pitcher	Souvenir Fan
Irishmen	Commercial Actors

Musical Numbers

1. Swing
2. Brooklyn
3. All Part Of The Game
4. Ready To Play
5. Swing Reprise
6. What's In Your Heart
7. I Wish We Could go There

A Big Day for Baseball: A Magic Tree House Adventure Activities

Setting The Scene

List on the board the following words: Brooklyn, Brooklyn Bridge, Hudson River, Ebbets Field, and Jackie Robinson. Brainstorm as a group what the students already know about the given places or people. As a class, use a map to locate Brooklyn, New York, and ask them to imagine what life might have been like in 1947. Discuss the concepts of segregation and integration during Jackie Robinson's time and compare it to today. This will come in handy later in "Design A Backdrop" activity.



A Big Day for Baseball: A Magic Tree House Adventure Activities

Discussion Questions

Asking questions that lead students up the “thinking ladder”.

Use the following pattern in asking questions:

1. Ask OPEN questions to encourage and engage children.
2. Ask FOCUSED questions to elicit and organize specific information
3. Ask CONNECTING questions to help children learn to see the relationships between events, characters and ideas.
4. Ask broad questions to help children GENERALIZE/ learn to draw conclusions.
5. Accept, record and read all responses on the board, chart or overhead for all to see.



image source: classroomclipart.com

OPEN question examples:

- What did you notice at the play today....What did you see?
- What about the play was different from the book/story?
- What surprised you?
- What impressed you?

FOCUSED questions: (questions that probe children’s’ insights)

- What did you learn about America in 1947, or about Jackie Robinson and the people of his time?

ANALYZING/CONNECTING questions:

- Why do you think Morgan LeFay wanted Jack and Annie to witness that particular baseball game?
- What lesson does this story teach about American history?
- Is there a moral to this story?
- What from the story makes you think that?

A Big Day for Baseball: A Magic Tree House Adventure Activities

Design a Backdrop

In *Showtime for Shakespeare: A Magic Tree House Adventure*, Jack and Annie visit London, England. If Jack and Annie were in London, what would the buildings and decorations behind them look like?

1. Pick a place in Brooklyn (Brooklyn Bridge, Hudson River, Ebbets Field, etc).
2. Research some images on the place you choose.
3. Imagine Jack and Annie standing at the place you choose.
4. Draw and color what you imagine in the rectangle.
5. Compare your drawing to a friends. What is similar? What is different?



The set designer would give a drawing like this to the technical director to begin building the set.

A Big Day for Baseball: A Magic Tree House Adventure

Activities

Read students a Magic Treehouse story, stopping to clearly show any pictures or illustrations to the students. When finished, ask the students to illustrate the plot/action as it occurred throughout the story. Have students volunteer to share their illustrations with the rest of the class.

Somebody:

Who is the main Character?

Wanted:

What did the character want?

But

What was the problem?

So:

How did the character try to solve the problem?

Then:

What was the resolution to the problem?



A Big Day for Baseball: A Magic Tree House Adventure Activities

Friendly Letter Writing

We love to hear from you at Orlando Shakes! So write us a letter to let us know what you thought! Introduce your topic, state your opinion, supply a reason for your opinion and close the letter. Follow to format below to include a heading, salutation, body, closing, and signature. Format an envelope according to the picture and send it our way. Teacher and parent comments are also appreciated! Thank you!

From:

Print Name _____

Street Address _____

City _____, State _____, Zip _____



Dear Orlando Shakespeare Theater,

Sincerely,

Sign Name _____

Print Name _____

Print Name _____	
Street Address _____	
City _____, State _____, Zip _____	
Orlando Shakespeare Theater ATTN: Education Department 812 East Rollins Street Orlando, FL 32803	