



ORLANDO
SHAKESPEARE
THEATER
IN PARTNERSHIP WITH UCF

Study Guide 2015 - 2016



Script and Lyrics by

Mo Willems

Music by

Deborah Wicks La Puma

Based on the book *Elephant and Piggie* books by Mo Willems

Published by Hyperion Books for Children

Directed by

Melissa Mason Brillard

Florida Standards

- LAFS.K12.SL.1
- LAFS.K12.R.1
- LAFS.K12.R.3
- LAFS.K12.L.2
- LAFS.K12.L.3
- LAFS.K12.L.1

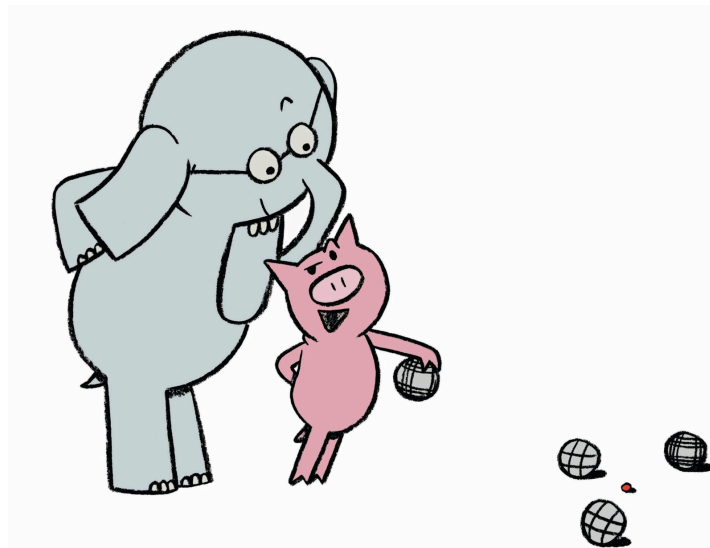
- SS.K123.G.1
- SS.K.G.3
- SS.K.G.2

- TH.K123.C.3
- TH. K123.H.3
- TH. K123.O.3
- TH.K123.S.1
- TH.K123.F.1

Elephant & Piggie's "We're in a Play!"

Table of Contents

Introduction	p. 3
Enjoying Live Theater	p. 4
 <u>About the Play</u>	
The Authors	p. 6
The Playwright	p. 6
The Characters	p. 7
Summary	p. 7
 <u>Activities</u>	
Building a Story	p. 8
Discussion Questions	p. 10
Adventure Activities	p. 11
Friendly Letter Writing	p. 12
 Tell Us What You Think!	 p. 14



Elephant & Piggie's "We're in a Play!"

An Introduction

Educators:

First, let me thank you for taking the time out of your very busy schedule to bring the joy of theatre arts to your classroom. We at Orlando Shakes are well aware of the demands on your time and it is our goal to offer you supplemental information to compliment your curriculum with ease and expediency.

With that in mind, we've redesigned our study guides to be more "user friendly." We've offered you activities that you may do in one class period with minimal additional materials. These exercises will aid you in preparing your students to see a production, as well as applying what you've experienced when you return to school. We've included Sunshine and Common Core Standards to assure you that those curriculum needs are being met.

It is our hope that by streamlining our guides they will invite you to dip in to grab historical background on an author or playwright, a concise plot summary and colorful character descriptions, discussion questions to explore in class or as writing assignments and interactive activities to bring the magic of live performance back to your classroom. And, of course, how to prepare your students to enjoy live theater.

We look forward to hosting you at the Lowndes Shakespeare Theater. Additionally, should you wish to bring our Actor/Educators into your classroom, we will work around your schedule. Feel free to contact us at Orlando Shakes should you have any questions or suggestions on how we can better serve you. We are always learning from you.

Thank you for your tremendous work in nurturing our audiences of tomorrow.

Bravo!

Anne Hering
Director of Education



Elephant & Piggie's "We're in a Play!"

Enjoying Live Theater

"Theater is a Team Sport"

The **Playwright** writes the script. Sometimes it is from an original idea and sometimes it is adapted from a book or story. The Playwright decides what the characters say, and gives the Designers guidelines on how the play should look.

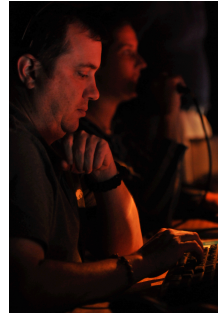


Costume Designer-
Denise Warner
Photo: Rob Jones

The **Director** creates the vision for the production and works closely with the actors, costume, set and lighting designers to make sure everyone tells the same story.

The **Actors** use their bodies and voices to bring the author's words and the director's ideas to life on the stage.

The **Designers** imagine and create the lights, scenery, props, costumes and sound that will compliment and complete the director's vision.



Sound Designer -
Britt Sanducky
Photo: Rob Jones

The **Stage Manager** assists the director during rehearsals by recording their instructions and making sure the actors and designers understand these ideas. The Stage Manager then runs the show during each performance by calling cues for lights and sound, as well as entrances and exits.



Stage Manager-Stacey
Renee Norwood
Photo: Rob Jones

The **Shop and Stage Crew** builds the set, props and costumes according to the designer's plans. The Stage Crew sets the stage with props and furniture, assists the actors with costume changes and operates sound, lighting and stage machinery during each performance.

The **Front of House Staff** welcomes you to the theater, takes your tickets, helps you find your seat and answers any question you may have on the day of performance.



Creative Team of The Merry Wives of Windsor
Photo: Rob Jones

The Theater is where it all takes place. Orlando Shakespeare Theater In Partnership with UCF is the only professional, classical theater company in Central Florida, reaching students and audiences in the surrounding eight counties.

Mission/Vision:

With Shakespeare as our standard and inspiration, the Orlando Shakespeare Theater In Partnership with UCF produces bold professional theater, develops new plays, and provides innovative educational experiences that enrich our community. Our vision is to create theater of extraordinary quality that encourages the actor/audience relationship, embraces the passionate use of language, and ignites the imagination.

Elephant & Piggie's "We're in a Play!" Enjoying Live Theater

The Audience is the reason Live Theater exists. At Orlando Shakes, we cherish the Actor/Audience relationship, the unique give and take that exists during a performance which makes the audience an ACTIVE participant in the event. The actors see the audience just as the audience sees the actors, and every, laugh, snuffle, chuckle and gasp the audience makes effects the way the actor plays his next moment. We want you to be engaged, and to live the story with us!

There are certain Conventions of the Theatrical Event, such as when the lights go down, you know that the show is about to start, and that the audience isn't encouraged to come and go during a performance. Here are some other tips to help you and your classmates be top notch audience members:

- Please make sure to turn off your cell phones. And NO TEXTING!
- Please stay in your seat. Try to use the restroom before you take your seat and stay in your seat unless there is an emergency.
- Please do not eat or drink in the theater.



Elephant & Piggie's "We're in a Play!"

About the Play

"The Author"



#1 New York Times Bestseller
Mo Willems began his career as a writer and animator for PBS' *Sesame Street*, where he garnered 6 Emmy Awards for his writing. During his nine seasons at *Sesame Street*, Mo also served as a weekly commentator for BBC Radio and created two animated series, Nickelodeon's *The Off-Beats* and Cartoon Network's *Sheep in the Big City*.

While serving as head writer for Cartoon Network's #1 rated show, *Codename: Kids Next Door*, Mo began writing and drawing books for children. His debut effort, *Don't Let the*

Pigeon Drive the Bus! became a New York Times Bestseller and was awarded a Caldecott Honor in 2004. The following year *Knuffle Bunny: a Cautionary Tale* was awarded a Caldecott Honor. The sequel, *Knuffle Bunny Too: a Case of Mistaken Identity* garnered Mo his third Caldecott Honor in 2008.

In addition to picture books, Mo created the *Elephant and Piggie* books, a series of "Easy Readers". For older audiences he has published an illustrated memoir of his year-long trip around the world in 1990-91 entitled *You Can Never Find a Rickshaw When it Monsoons* and *Don't Pigeonhole Me!*, a collection of 20 years of his annual sketchbooks. His books have been translated into over 20 languages.

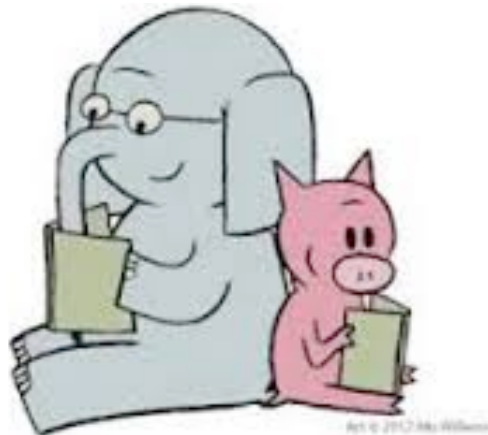
Mo's drawings, wire sculptures, and sculpture have exhibited in

numerous galleries and museums across the nation.

Mo voices and produces animated cartoons based on his books with Weston Woods Studios. The animated *Knuffle Bunny* was awarded Best Film during the New York International Children's Film Festival in 2008 and received the Andrew Carnegie Medal in 2007. The animated *Don't Let the Pigeon Drive the Bus!* garnered Mo his second Carnegie Medal in 2010

Mo wrote the script and lyrics for *Knuffle Bunny: A Cautionary Musical* and *Elephant and Piggie's WE ARE IN A PLAY!* Both plays commissioned by and debuted at the Kennedy Center in Washington, DC

Mo lives in Massachusetts with his family.



Elephant & Piggie's "We're in a Play!" About the Play "The Characters"

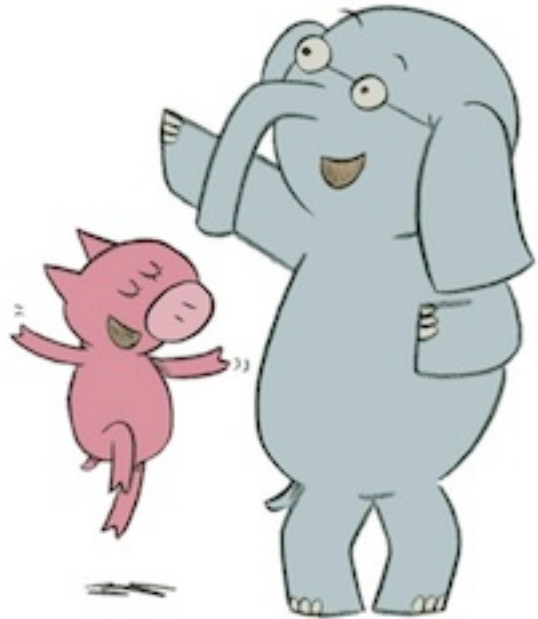
Gerald - An Elephant

Piggie - A Piggie

Squirrelles - Singing Squirrels

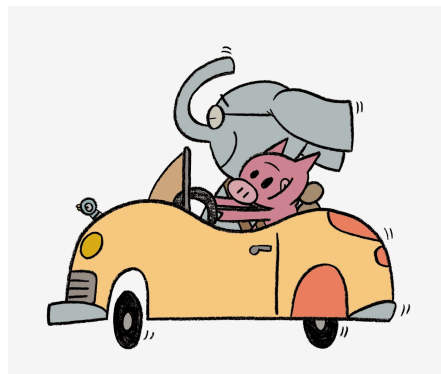
Dog - A Dog

Pengu - A Penguin



Elephant & Piggie's "We're in a Play!" About the Play "Summary"

Elephant Gerald is careful. Piggie just wants to play! Our favorite characters from Mo Willems' beloved *Elephant & Piggie* series set the stage for this vaudevillian romp of a musical, where pachyderm and swine heroically explore the importance of friendship. With the help of nutty backup singers, The Squirrelles, this is an animal party that you won't want to miss!



Elephant & Piggie's "We're in a Play!"

Activities

"Building a Story"

General Goal(s):

- Foster vocabulary growth
- Practice prediction skills
- Practice speaking to groups
- Develop creative writing skills
- Facilitate collaboration

Objectives:

The student:

- Demonstrates a basic understanding of internal story grammar.
- Illustrates the beginning, middle, and end in a story.
- Collaborates with classmates to create a resolution to the problem posed within the given story.

Required Materials:

- An *Elephant & Piggie* Adventure
- Chart Paper
- Crayons

Anticipatory Set (Lead-In):

The class may be broken into small groups or arranged in a small circle on the floor around the storyteller. Explain to the class that today we are going to learn how to build a story.

Step-By-Step Procedures:

- Read an *Elephant & Piggie* book, stopping to clearly show any pictures or illustrations to the students.
- Stop reading about 3/4 of the way through the story.
- Distribute crayons and the sequencing worksheet provided.
- Ask the students to illustrate the events that occurred in the beginning and middle of the story. These drawings should be placed in the first and second square on the sheet of paper.
- In the last square students should draw how they imagine the story will conclude.
- Have students volunteer to share their conclusions with the rest of the class.
- Teacher proceeds to finish reading the book so that students can see how the author finished.

Assessments:

The student:

- Demonstrates a basic understanding of internal story grammar.
- Uses a Story Map to identify and diagram the characters, settings, problems, and solutions within a story.
- Accurately retells the events in the beginning, middle, and end of a given story.

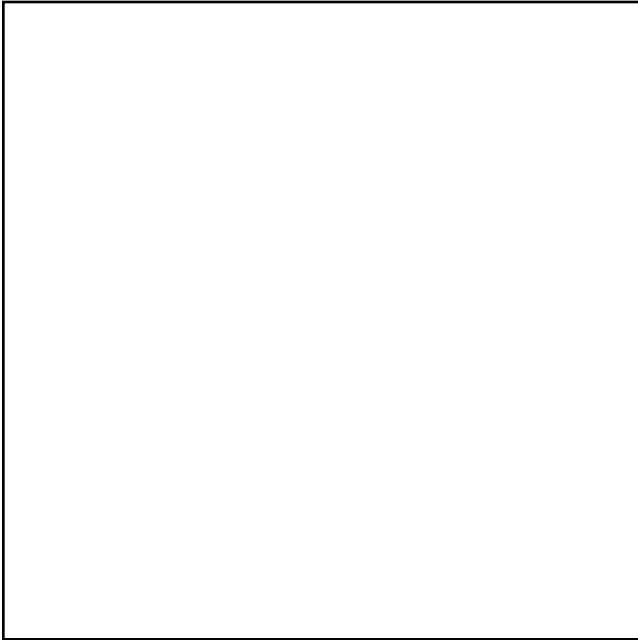
Elephant & Piggie's "We're in a Play!" Activities "Building a Story"

Name: _____

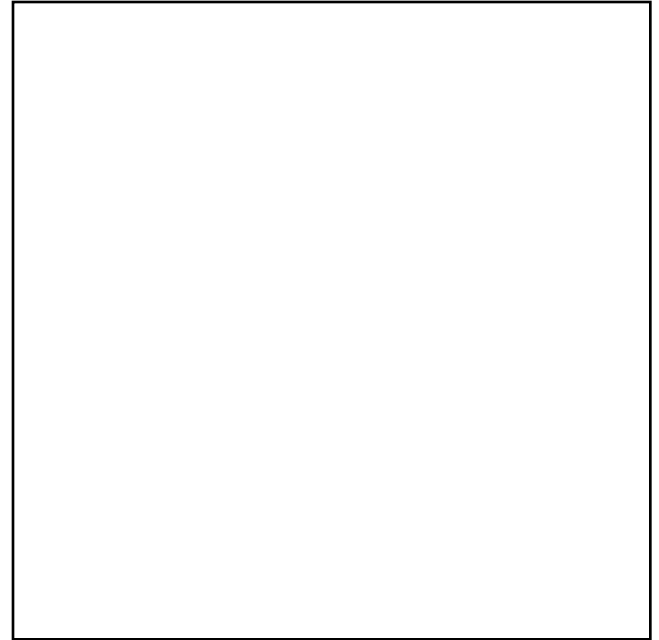
Date: _____

Title: _____

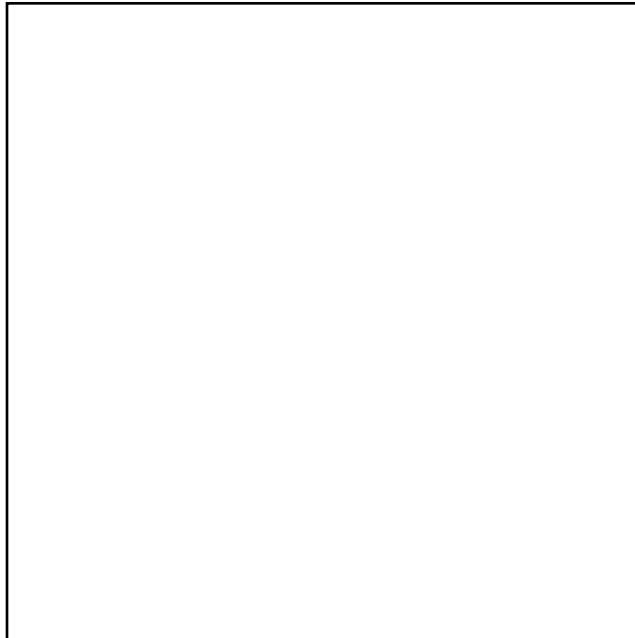
Event 1: Beginning



Event 1: Middle



Event 1: Ending



Using this chart, work with your child to illustrate the events that occurred in the beginning, middle and the end of *Elephant & Piggie* "We're in a Play".

Elephant & Piggie's "We're in a Play!" Activities "Discussion Questions"

*Asking questions that lead children up the
"thinking ladder".*

Use the following pattern in asking questions:

1. Ask OPEN questions to encourage and engage children.
2. Ask FOCUSED questions to elicit and organize specific information
3. Ask CONNECTING questions to help children learn to see the relationships between events, characters and ideas.
4. Ask broad questions to help children GENERALIZE/learn to draw conclusions.
5. Accept, record and read all responses on the board, chart or overhead for all to see.

OPEN question examples:

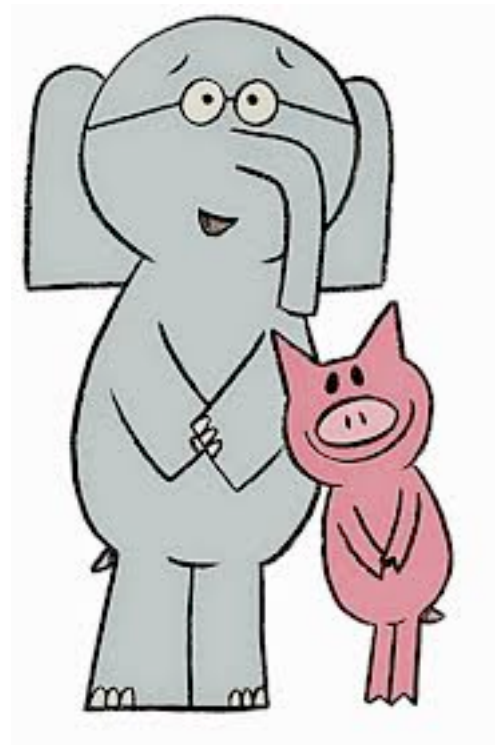
- What did you notice at the play today....Anything at all... What did you see?
- What about the play was different from the book/story?
- What surprised you?
- What impressed you?

FOCUSED questions: (questions that probe children's insights)

- What did Piggie play for Gerald? (_____.)
- Why did he play this for Gerald? (_____)

ANALYZING/CONNECTING questions:

- What did Gerald and Piggie learn about friendship?
- Do you think Gerald and Piggie liked being in a play? Why?



Elephant & Piggie's "We're in a Play!" Activities "Adventure Activities"

Can I Play Too?

Can I Play Too? introduces a new friend for Elephant and Piggie — Snake! Have the kids pair up to brainstorm another new friend for Elephant and Piggie, and share with the group. How would Elephant and Piggie respond to this new friend? What kinds of games could they play with their new friend?

Where Are You Going?

At the end of *I Am Going!*, Piggie reveals that she is going . . . to have lunch! But where are some of the other places Elephant and Piggie could go? Distribute blank pieces of paper and crayons to each of the children, asking them to draw one fun new place where Elephant and Piggie could go. Then have the class share all of their exciting locations!

It's Time to Cut A Rug!

After reading *Elephants Cannot Dance!*, teach

the kids a bit about some of the well-known dances from different decades, and give them an opportunity to strut their stuff! Bring in a CD player along with music from the 1920s to the 1970s. Here is a quick list of dances for your reference, or go online to find more dance moves!

1920s – The Charleston

1930s – Tap

1940s – Swing

1950s – Cha-cha

1960s – The Twist

1970s – The Pogo or The Hustle



What's YOUR Book?

In *We Are in a Book!*, Elephant and Piggie discover that they're being read! Now is your chance to create your own story! Complete the scene below with Elephant and Piggie to make a page from your very own Elephant and Piggie story!

Elephant & Piggie's "We're in a Play!" Activities "Friendly Letter Writing"

OBJECTIVES:

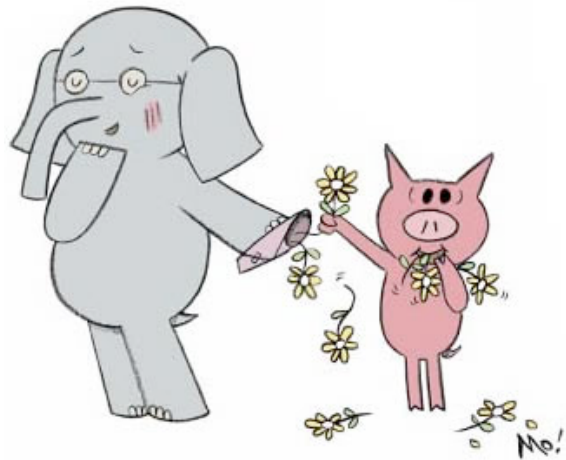
This lesson teaches children the five parts of a friendly letter. After visiting various websites to learn more about writing friendly letters, your child will be able to write a friendly letters utilizing the writing process.

The student:

- Uses the writing process to develop friendly letters.
- Uses the Internet to learn more about writing friendly letters.

REQUIRED MATERIALS:

- Poster board or Paper
- Markers
- Examples of friendly letters
- Computer with internet access



PROCEDURES/ACTIVITIES:

1. Visit the following websites:

<http://pbskids.org/arthur/games/letterwriter/letter.html>

<http://www.readingrockets.org/article/22319/>

http://www.educationworld.com/a_lesson/lesson281.shtml

2. Take time to discuss each part of the letter.

Friendly Letter Check List	YES	NO
I used capital letters & punctuation correctly.		
My letter has a heading		
My letter has a greeting		
My letter has a body		
My letter has a closing		
My letter has a signature		
My letter is ready to be checked by the teacher.		

Elephant & Piggie's "We're in a Play!" Activities "Friendly Letter Writing"

1.Heading

Name_____

Address_____

City, State, Zip code_____

2. Salutation

Dear _____,

3.Body

4.Closing

Sincerely,

5.Signature

Your Name_____

Tell us what you think!

After watching the play, write Orlando Shakespeare Theater a “Friendly Letter” and tell us what you think! Tell what you liked or disliked about the story, the characters, costumes, or set. Make sure to use the 5 parts of the letter listed in the lesson and to support your thoughts with examples and reasons.

Mail to: Orlando Shakespeare Theater
Education Department,
812 E. Rollins Street, Orlando, FL 32803.

*Teacher and Parent comments are also
Appreciated!*

